

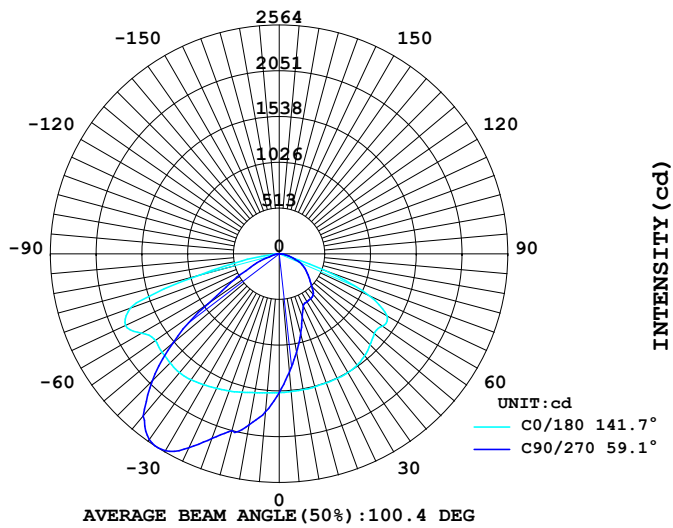
LUMINAIRE PHOTOMETRIC TEST REPORT

Report number:

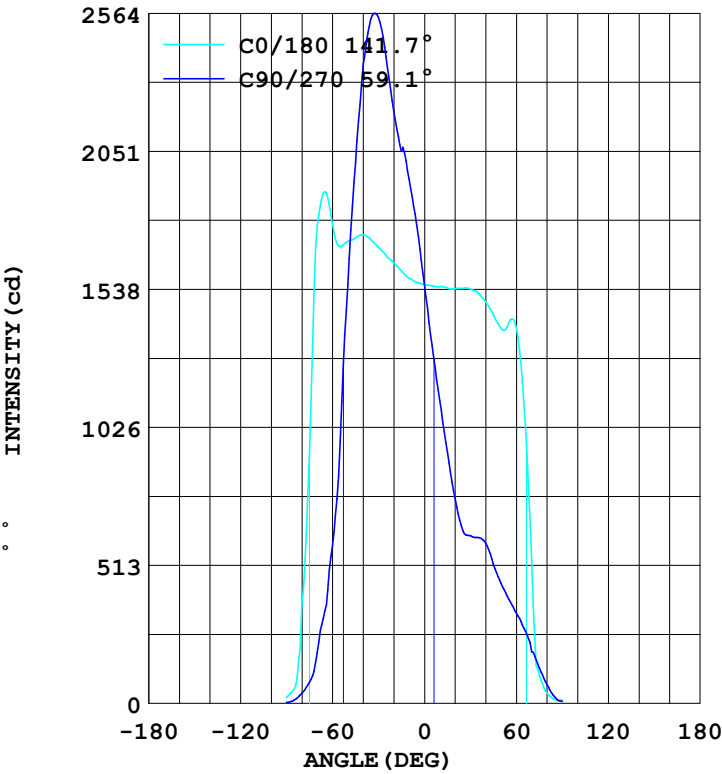
MANUFACTURER: ILUMEN GMBH	Address:	
NAME: Agnes A	TYPE: IL-PO29A-N0402C-T3B	WEIGHT:
SPECIFICATION: 5050LED、4000K、T3B	DIMENSION:	SERIAL No.:

DATA OF LAMP		Imax(cd)	3230	S/MH (C0/180)	1.69
MODEL		EFFICIENCY (%)	100.0	S/MH (C90/270)	1.72
NOMINAL POWER(W)	40	TOTAL FLUX(lm)	6035.1	Voltage(V)	231.0
RATED VOLTAGE (V)	232	EFFICIENCY (lm/W)	154.8	Current(A)	0.164
NOMINAL FLUX(lm)	6035.1	$\eta$ up (%)	0.0	Power(W)	38.99
LAMPS QUANTITY	1	$\eta$ down (%)	100.0	Power Factor (PF)	0.920
TEST VOLTAGE (V)	231.0	Effective Flux(lm)	0.0	EEL	0.000

LUMINOUS INTENSITY DISTRIBUTION



LUMINOUS INTENSITY DISTRIBUTION



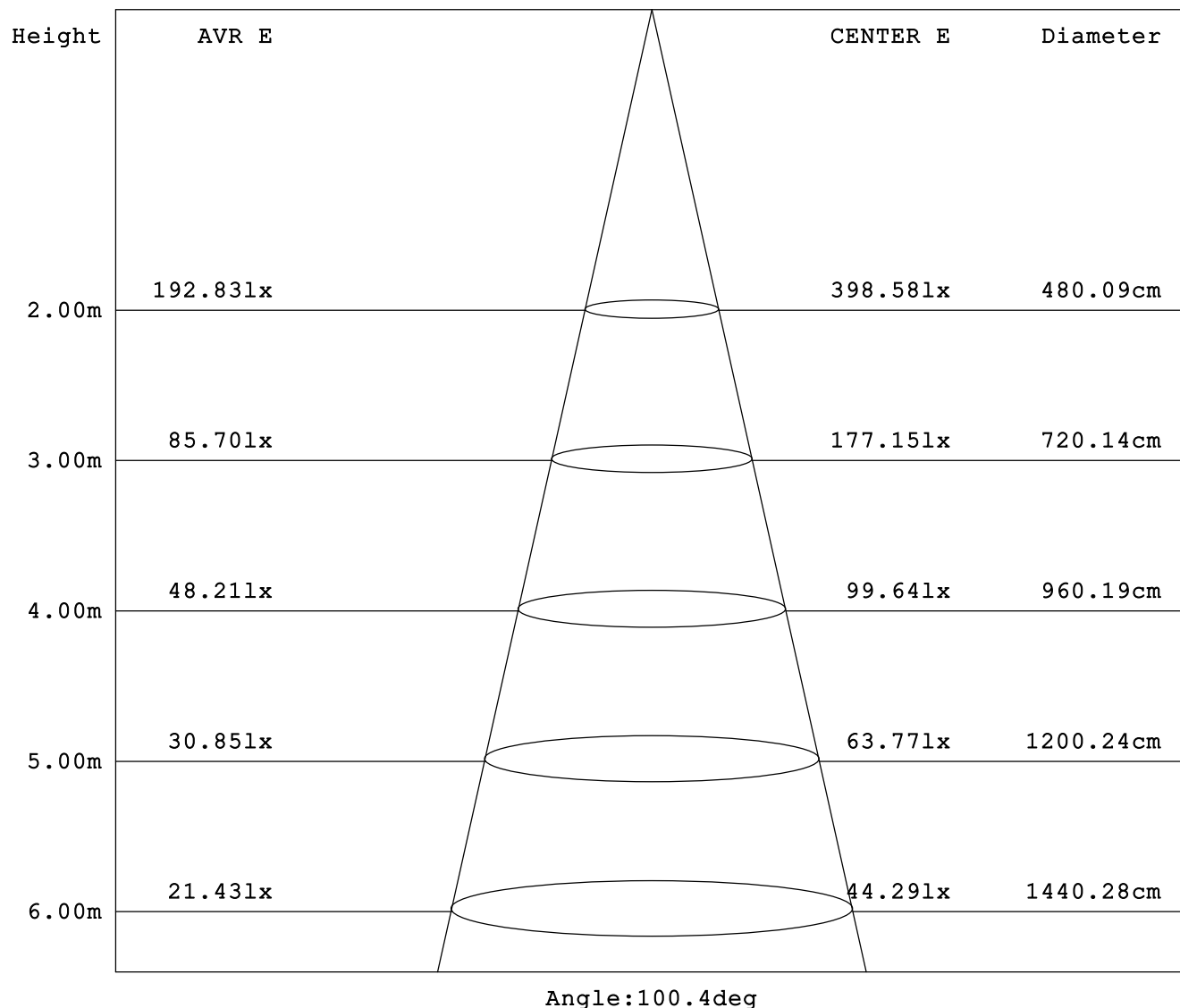
Test System:  
 Temperature: 25.3 DEG  
 Operators:  
 Test Date: 2025.07.01

Test Set: 5.0 deg/s C-Gamma (TYPE C)  
 Humidity: 65.0%  
 Test Distance: 10.000 m  
 Remarks:

## AVERAGE AND CENTER E Figure

Report number:

MANUFACTURER: ILUMEN GMBH	Address:	
NAME: Agnes A	TYPE: IL-PO29A-N0402C-T3B	WEIGHT:
SPECIFICATION: 5050LED、4000K、T3B	DIMENSION:	SERIAL No.:



Test System:  
Temperature: 25.3DEG  
Operators:  
Test Date: 2025.07.01

Test Set: 5.0deg/s C-Gamma (TYPE C)  
Humidity: 65.0%  
Test Distance: 10.000 m  
Remarks:

## ZONAL FLUX DIAGRAM

Report number:

MANUFACTURER: ILUMEN GMBH	Address:	
NAME: Agnes A	TYPE: IL-PO29A-N0402C-T3B	WEIGHT:
SPECIFICATION: 5050LED、4000K、T3B	DIMENSION:	SERIAL No.:

γ	C0	C45	C90	C135	C180	C225	C270	C315	γ	Zone	total
5.0	1565	1721	1776	1702	1551	1383	1330	1406	0- 5	37.18	37.18
10.0	1580	1874	1948	1826	1547	1225	1124	1260	5- 10	111.0	148.2
15.0	1608	2020	2051	1955	1544	1068	932.4	1120	10- 15	183.3	331.5
20.0	1637	2157	2202	2084	1541	913.1	760.7	980.5	15- 20	253.0	584.5
25.0	1664	2331	2401	2239	1542	776.2	643.2	845.5	20- 25	323.1	907.6
30.0	1696	2468	2550	2369	1540	677.9	623.2	720.2	25- 30	396.7	1304
35.0	1724	2594	2541	2488	1525	649.5	616.0	644.8	30- 35	470.2	1775
40.0	1740	2634	2375	2543	1492	675.4	595.8	640.4	35- 40	532.2	2307
45.0	1730	2577	2011	2518	1445	684.9	518.3	665.8	40- 45	573.1	2880
50.0	1717	2407	1559	2368	1394	659.7	446.2	657.1	45- 50	587.2	3467
55.0	1697	2108	975.9	2092	1413	575.4	388.5	626.7	50- 55	570.0	4037
60.0	1780	1769	587.8	1855	1397	414.3	336.0	472.2	55- 60	530.6	4568
65.0	1901	1285	344.7	1551	1109	294.3	278.5	328.7	60- 65	492.0	5060
70.0	1771	630.8	188.4	1046	530.6	202.7	191.7	224.6	65- 70	444.5	5505
75.0	930.1	244.1	78.82	353.4	105.0	113.7	132.5	123.0	70- 75	334.8	5839
80.0	364.5	102.1	38.00	84.53	39.00	44.57	69.70	55.93	75- 80	149.2	5989
85.0	53.59	40.42	12.26	30.68	14.69	10.92	23.88	16.80	80- 85	37.72	6026
90.0	22.55	12.45	4.234	10.64	12.20	5.462	7.817	6.157	85- 90	8.728	6035
95.0									90- 95		
100.0									95-100		
105.0									100-105		
110.0									105-110		
115.0									110-115		
120.0									115-120		
125.0									120-125		
130.0									125-130		
135.0									130-135		
140.0									135-140		
145.0									140-145		
150.0									145-150		
155.0									150-155		
160.0									155-160		
165.0									160-165		
170.0									165-170		
175.0									170-175		
180.0									175-180		
DEG	LUMINOUS INTENSITY:cd									UNIT:lm	

Test System:  
Temperature:25.3DEG  
Operators:  
Test Date:2025.07.01

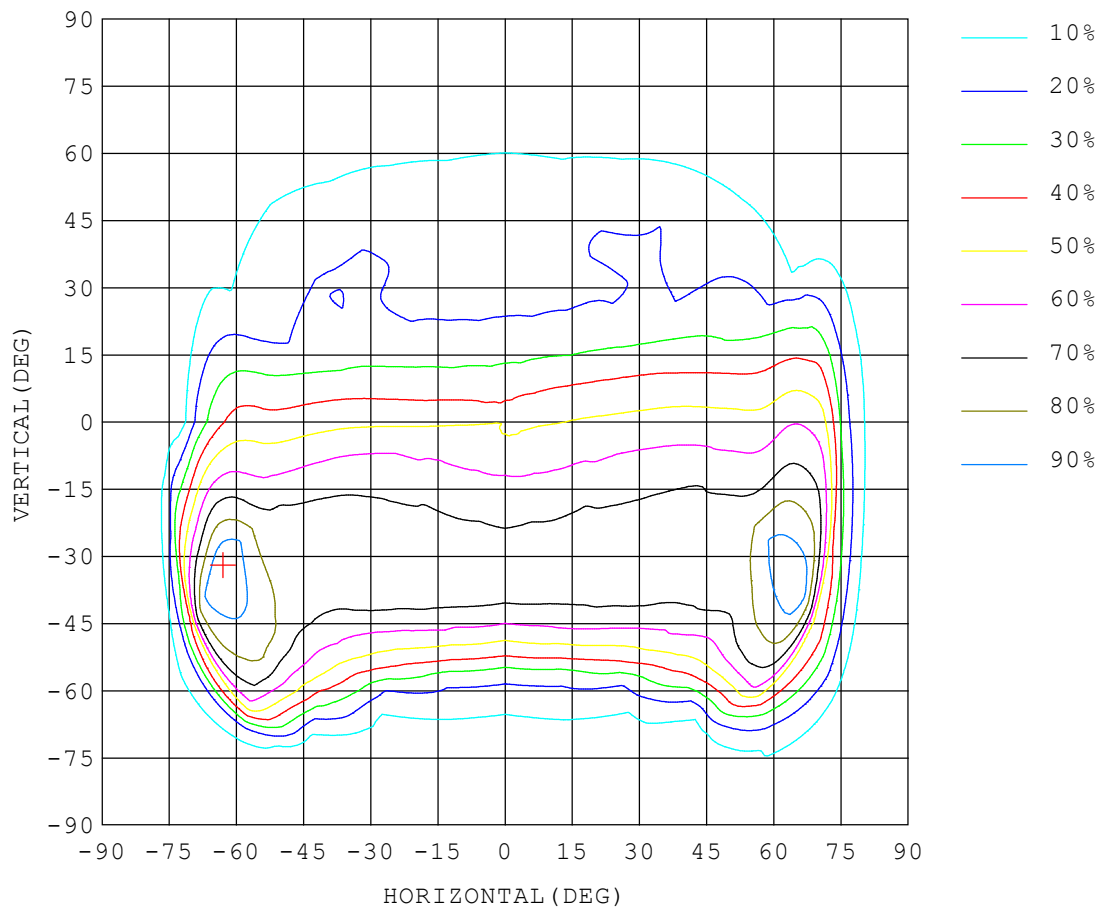
Test Set: 5.0deg/s C-Gamma (TYPE C)  
Humidity:65.0%  
Test Distance:10.000 m  
Remarks:

## ISOCANDELA DIAGRAM

Report number:

MANUFACTURER: ILUMEN GMBH	Address:	
NAME: Agnes A	TYPE: IL-PO29A-N0402C-T3B	WEIGHT:
SPECIFICATION: 5050LED、4000K、T3B	DIMENSION:	SERIAL No.:

UNIT: cd



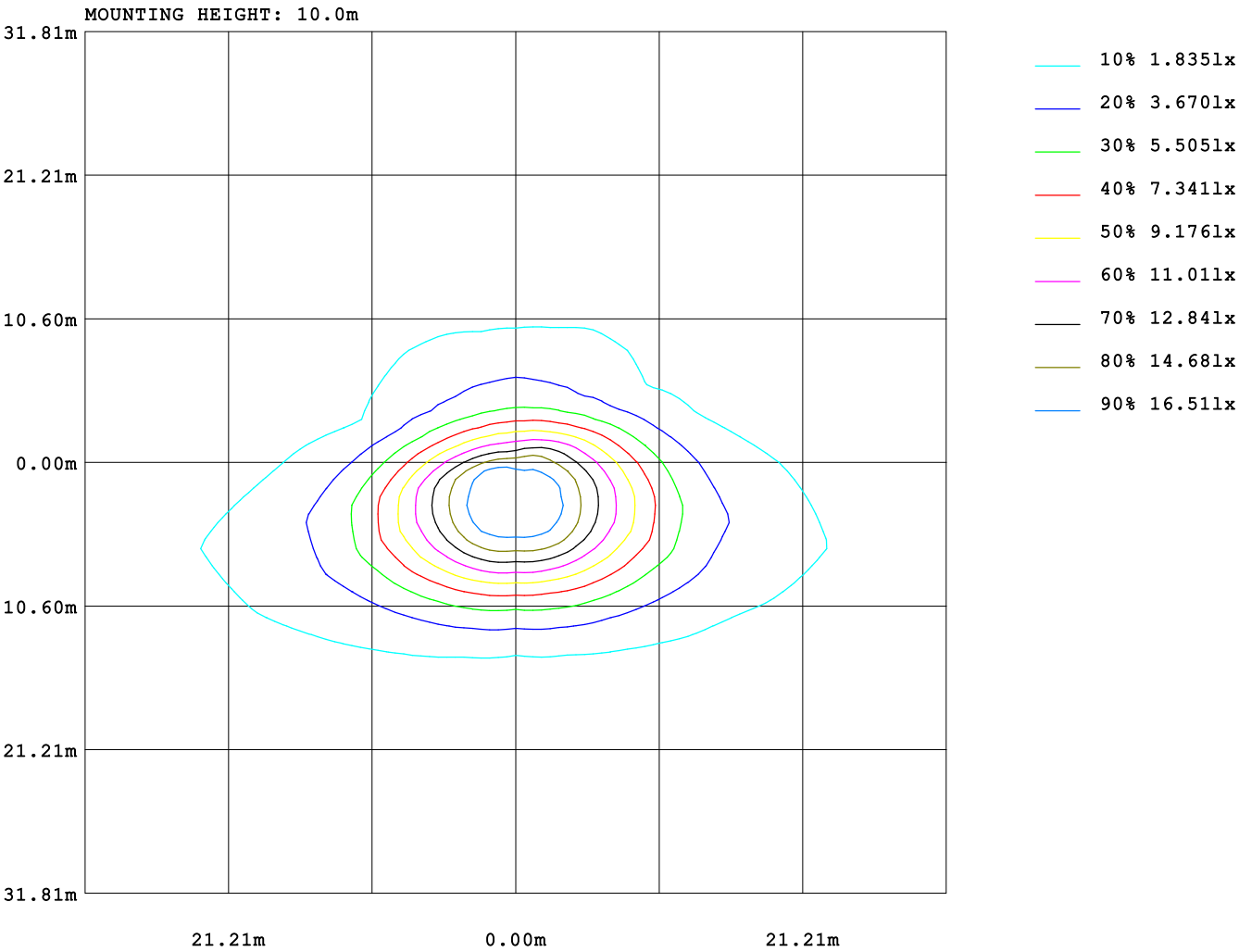
Test System:  
Temperature: 25.3 DEG  
Operators:  
Test Date: 2025.07.01

Test Set: 5.0 deg/s C-Gamma (TYPE C)  
Humidity: 65.0%  
Test Distance: 10.000 m  
Remarks:

ISOLUX DIAGRAM

Report number:

MANUFACTURER: ILUMEN GMBH	Address:	
NAME: Agnes A	TYPE: IL-PO29A-N0402C-T3B	WEIGHT:
SPECIFICATION: 5050LED、4000K、T3B	DIMENSION:	SERIAL No.:



Test System:  
Temperature: 25.3 DEG  
Operators:  
Test Date: 2025.07.01

Test Set: 5.0 deg/s C-Gamma (TYPE C)  
Humidity: 65.0%  
Test Distance: 10.000 m  
Remarks:

## LUMINOUS DISTRIBUTION INTENSITY DATA

Report number:

<b>MANUFACTURER: ILUMEN GMBH</b>	<b>Address:</b>	
<b>NAME: Agnes A</b>	<b>TYPE: IL-PO29A-N0402C-T3B</b>	<b>WEIGHT:</b>
<b>SPECIFICATION: 5050LED、4000K、T3B</b>	<b>DIMENSION:</b>	<b>SERIAL No.:</b>

UNIT: cd

C (DEG) γ (DEG)	0	15	30	45	60	75	90	105	120	135	150	165	180	195	210
0.0	1557	1557	1557	1557	1557	1557	1557	1557	1557	1557	1557	1557	1557	1557	1557
5.0	1565	1622	1674	1721	1752	1776	1776	1769	1738	1702	1652	1602	1551	1491	1433
10.0	1580	1697	1796	1874	1917	1953	1948	1938	1885	1826	1743	1655	1547	1420	1312
15.0	1608	1781	1906	2020	2073	2108	2051	2086	2010	1955	1836	1709	1544	1351	1189
20.0	1637	1863	2035	2157	2169	2261	2202	2234	2120	2084	1931	1771	1541	1276	1072
25.0	1664	1945	2121	2331	2379	2433	2401	2400	2326	2239	2028	1838	1542	1206	952
30.0	1696	2042	2248	2468	2587	2624	2550	2589	2516	2369	2148	1921	1540	1132	835
35.0	1724	2133	2373	2594	2670	2652	2541	2637	2597	2488	2264	1994	1525	1047	734
40.0	1740	2220	2509	2634	2567	2485	2375	2484	2518	2543	2377	2042	1492	938	676
45.0	1730	2298	2597	2577	2383	2148	2011	2161	2347	2518	2456	2080	1445	809	658
50.0	1717	2325	2604	2407	2039	1757	1559	1756	2011	2368	2483	2124	1394	672	667
55.0	1697	2424	2552	2108	1563	1195	976	1230	1608	2092	2469	2178	1413	536	621
60.0	1780	2723	2381	1769	958	675	588	682	1100	1855	2460	2496	1397	424	497
65.0	1901	3125	2362	1285	531	403	345	397	543	1551	2522	2978	1109	329	356
70.0	1771	3230	2304	631	279	245	188	249	273	1046	2475	2955	531	221	262
75.0	930	1640	1537	244	108	103	78.8	102	106	353	1947	2084	105	91.0	147
80.0	365	695	498	102	53.0	51.5	38.0	49.0	45.1	84.5	430	340	39.0	30.6	48.1
85.0	53.5	82.1	50.8	40.4	18.3	22.5	12.2	21.0	13.8	30.6	27.5	51.1	14.6	8.26	16.7
90.0	22.5	24.8	10.6	12.4	5.01	8.92	4.23	8.67	4.22	10.6	4.76	14.6	12.2	8.04	10.8

Test System:  
Temperature:25.3DEG  
Operators:  
Test Date:2025.07.01

Test Set: 5.0deg/s C-Gamma (TYPE C)  
Humidity:65.0%  
Test Distance:10.000 m  
Remarks:

## LUMINOUS DISTRIBUTION INTENSITY DATA

Report number:

MANUFACTURER: ILUMEN GMBH	Address:	
NAME: Agnes A	TYPE: IL-PO29A-N0402C-T3B	WEIGHT:
SPECIFICATION: 5050LED、4000K、T3B	DIMENSION:	SERIAL No.:

UNIT: cd

C (DEG) γ (DEG)	225	240	255	270	285	300	315	330	345
0.0	1557	1557	1557	1557	1557	1557	1557	1557	1557
5.0	1383	1352	1331	1330	1338	1368	1406	1458	1514
10.0	1225	1164	1124	1124	1141	1188	1260	1362	1480
15.0	1068	990	937	932	955	1025	1120	1264	1441
20.0	913	818	766	761	783	862	981	1165	1396
25.0	776	686	648	643	656	717	846	1063	1352
30.0	678	630	621	623	617	631	720	961	1306
35.0	650	633	618	616	617	629	645	843	1251
40.0	675	648	607	596	619	648	640	727	1174
45.0	685	637	538	518	569	663	666	631	1082
50.0	660	544	454	446	470	612	657	577	966
55.0	575	444	392	389	399	483	627	542	840
60.0	414	348	333	336	330	366	472	474	695
65.0	294	285	273	279	271	287	329	357	499
70.0	203	215	200	192	201	210	225	244	263
75.0	114	133	119	133	122	133	123	136	113
80.0	44.5	62.6	57.5	69.7	59.4	68.1	55.9	62.0	41.0
85.0	10.9	20.1	15.2	23.8	17.2	24.7	16.8	21.5	12.1
90.0	5.46	8.17	4.07	7.81	4.01	8.87	6.15	11.1	6.87

Test System:  
Temperature: 25.3 DEG  
Operators:  
Test Date: 2025.07.01

Test Set: 5.0 deg/s C-Gamma (TYPE C)  
Humidity: 65.0%  
Test Distance: 10.000 m  
Remarks: